



**GRUPO
EURORED**

Long Line



Long Line What is it?

At Grupo Eurored we specialize in providing everything necessary for the start-up of long line suspended crops, which has a wonderful adaptation to the ecosystem and which, due to the nature of its component materials, makes it more economically attractive due to the level of initial investment required, which is lower than that of other crops.

It is a method consisting of the installation of a main line, which can reach up to several kilometers in length, suspended by the use of flotation systems, which will be arranged depending on the productive load. This line is fixed to different anchoring systems depending on the oceanographic and environmental conditions of the place, in order to prevent it from being dragged by the current, to finally suspend the productive units that are going to be raised from it.

Myth farming and oyster farming are the main activities that use the long line system, although the cultivation of clams, scallops, scallops and algae, among others, is also increasingly in demand, applying production systems appropriate to each species.

Production can be established on the long line continuously, when the entire crop is arranged on the same rope, or simply, when only one rope is used per production.

Likewise, the system allows a floating, submerged or semi-submerged culture installation, depending on the conditions of exposure to light and required nutrients. Intensive farming is the most common in long line aquaculture, as it guarantees a greater amount of production, although with less growth.

One of the advantages of the long line system is that it gives the farmer the ability to have greater control over the culture, as it allows easy access to the production units to carry out checks at any time, which promotes safe growth at very low levels. cost. With minimal infrastructure, the long line system is the simplest, most efficient and most profitable of all aquaculture operations.

As specialists in this field, we will advise you on the main qualities of each system and type of crop, as well as the most suitable materials for its implementation.

SISTEMA DE CULTIVO	Intensivo	Continuo	Simple	Sumergido	Semisumergido	Sist. Productivo
Miticultura						
Ostricultura						
Algacultura						
Almejas						
OTRAS ESPECIES						
Vieira						
Zamburiñas						



Almejas
Clams



Vieiras
Scallops



Zamburiñas
Scallops



Algas
Algae

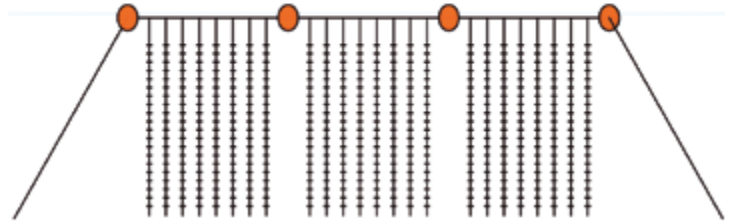
Continuous semi-submerged culture system

It is a farming method whereby the production line is below the waterline.

It is used in areas with high currents and is ideal for growing oysters, mussels, scallops, etc.

It is made up of headland buoys and a main line where the productive elements are supported.

It can be double or simple.



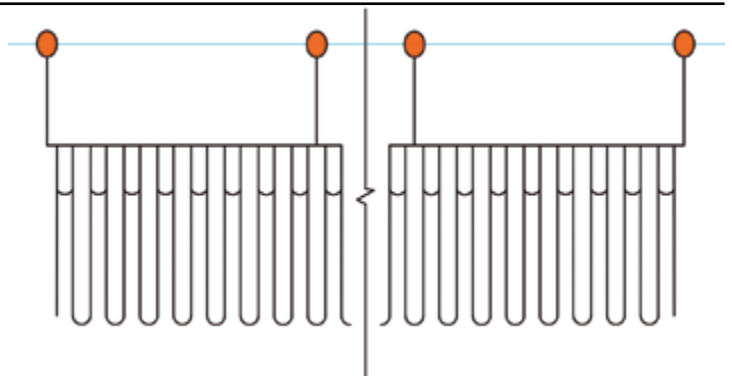
Continuous cultivation system

It is a cultivation method by which the production line is on the surface.

It is used in sheltered and protected waters. It is a system used for the cultivation of algae and mussels mainly. It is made up of headland buoys and a main line where the productive elements are supported.

Support buoys are installed as production requires.

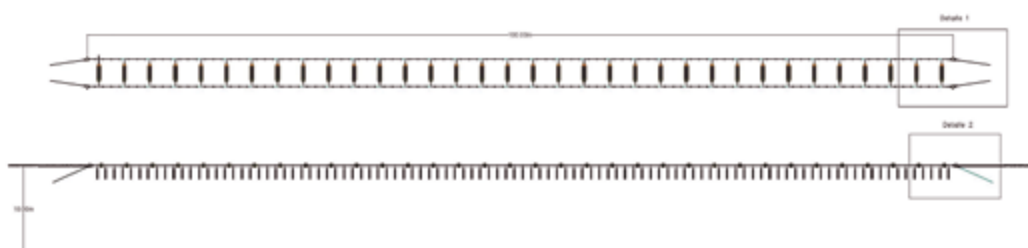
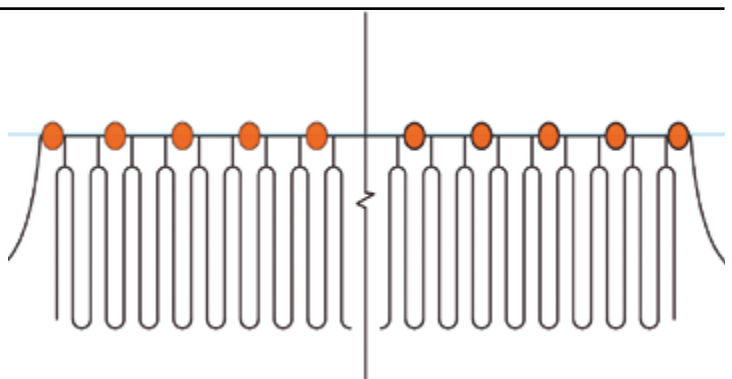
It can be double or simple.



Simple cultivation system

It is a cultivation method by which the production line is on the surface. It is used in sheltered and protected waters. It is a system used mainly for the cultivation of mussels and to hang the baskets, lanterns or baskets ideal for the cultivation of bivalves and other breeding species.

It is made up of headland buoys and a main line where the productive elements are supported. Support buoys are installed as production requires. It can be Double or Simple.



A close-up photograph showing a large pile of harvested oysters. The oysters are packed into several mesh bags, which are visible as a dark, grid-like pattern over the shells. The shells are mostly brown and tan, with some showing the white interior. The background is a solid blue rectangle.

OYSTER FARMING

Oyster Farming

Lanterns

The lanterns for suspended cultivation developed by the Eurored Group are made using virgin raw materials of superior quality, among which we find lanterns for baskets, plates or with steel rings, which are ideal for use in offshore systems thanks to their strong rings of 275Z steel and reinforced cross bars with 100% natural BASF PVC anti-corrosion plastic coating, which prevent oxidation without the need for additional treatments, making this a strong and durable product.

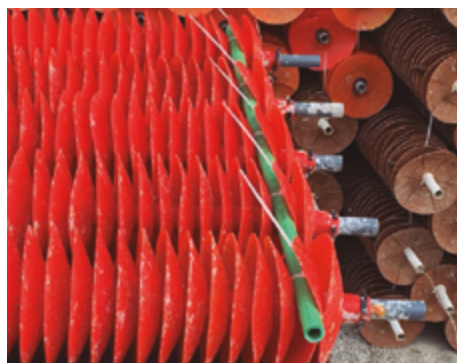
As manufacturers, our designs are offered in different sizes and formats (square, rectangular or cylindrical) to meet the production needs of each crop, as well as with different weights and closure systems (velcro, zipper or thread), fully customizable.

The meshes, square or rectangular, can be manufactured in RASHEL or PEHD in monofilament or multifilament, from 1x1 mm meshes. at 50x50mm span.

The meshes we use cover the entire productive stage of the species and vary from the first sowing phases to the fattening phase of 50x50 mm, being especially indicated for the cultivation of oysters, as well as other molluscs such as clams, scallops, etc. ...



Collectors



Collection discs with a large collection surface, offer a great capacity to capture wild oyster seeds. The catchment system is designed to remove the catchment mechanically.

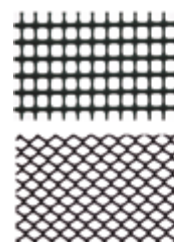
Characteristics:

- Discs from 150 mm to 160 mm.
- Tube length 1.20 m.
- PVC and PEAD material
- Different colors: black, brown, orange
- Made in Europe

Oyster bags

The oyster bags are made of High Density Polyethylene (HDPE) and treated with anti-UV and antioxidant agents, their mechanical properties are a guarantee of quality in terms of resistance to breakage and durability.

With rhombic or square mesh, it is a very strong, rigid and flexible material, with a wide range depending on the preferred technical characteristics: open; welded or reinforced and offered in different dimensions and mesh sizes.



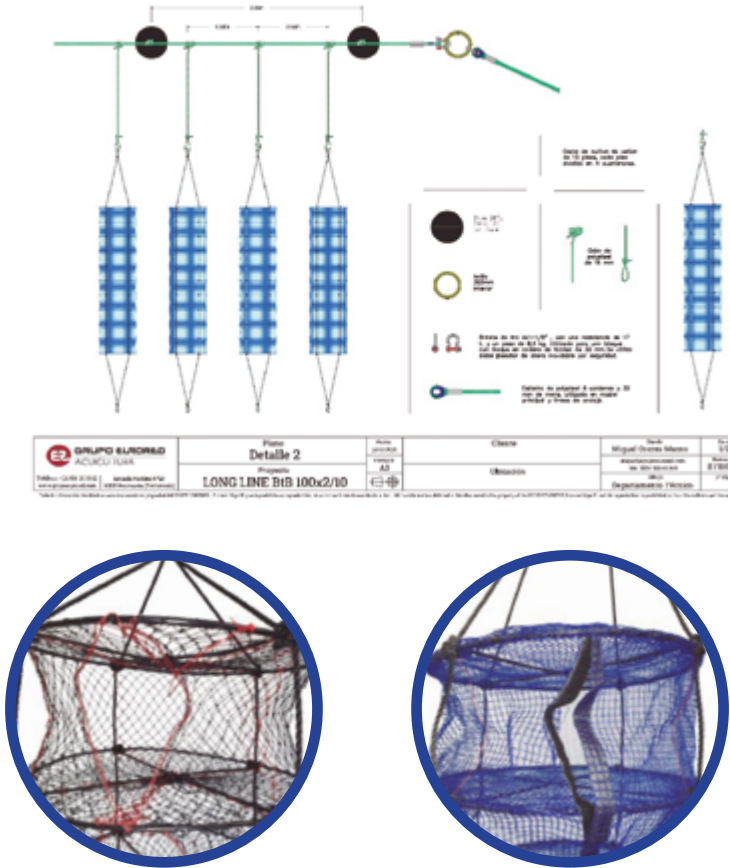
Oyster farming

Lanterns

TABLES OF LANTERN MODELS

Modelo de Linterna		ST1	ST2	ST3	ST4	ST5	ST6	ST7	ST8	ST9	ST10	ST11	ET1	ET2	ET3	ET4	ET5	ET6	ET7
Red	Malla (mm)	1x1	1.8x2	2x1	2x4	3x3	3x3.5	4x2	4.5x6	5x5	7x2	8x8	10x10	12x12	15x15	20x20	30x30	40x40	50x50
	Fase	B	B	B	B	B	B	B	B	I	I	I	I	I	F	F	F	F	F
	Tipo	Raschel / HDPE (Sin nudos)												Knotted / HDPE (Con Nudos)					
Dimensiones	Nº. Pisos	1 a 30																	
	Diámetro	38/45/50/80 cm																	
	Medidas	Cuadrada 40x40/50x50 cm / Rectangular 40x50/50x60/50x80 cm																	
Altura pisos	Cuerda	20/30 cm																	
	Red	17cm/25cm																	
Estructura	Aro	6/7 mm																	
	Cruceta	5/7 mm																	
Estructura Central	Aro	5/7 mm																	
	Cruceta	5/7 mm																	
Uniones	Tipo	Cierre/Gancho/Clip																	
	Terminal	Clip / Tapon plastico																	
Cuerda	Tipo	6/8/10/12 mm PE/PP/PA																	
	Superior	50/70 cm																	
	Inferior	100 cm																	
Sistema de cierre	Tipo	Velcro / Cremallera/ Hilo PE 800-1200 Deniers																	

* B: Beginning / Stocking I: Intermediate / Pre-growth F: Final / Fattening
Personalized designs and custom manufacturing






Oyster Farming

Collectors

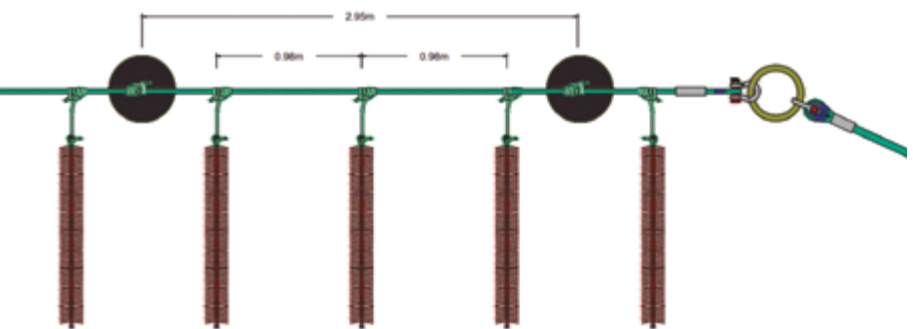
Discs for capturing oysters with a high collecting surface.



Material	Ømm	Colour	L(cm)	Unit/Tube	You/ pallet
HDPE	150		120	Four, Five	250
PVC	150		120	48	264
HDPE	150		120	49	140



Material	kg	Colour	L(cm)	or
PVC	255		120cm	2cm



Oyster Farming

Oyster bags



Product	(mm)	Colour	Dimension (cm)	Weight	Material
5319	30	●	160x45	1700	◇
8510	50x50	●	0.79x40	460	□
8576A	38x38	●	47x200	430	□

Poches for culture of pearl oysters

Product	Dimensions (cm) L x W x H	Weight	mesh size (mm)
PP	720x255x170	855	8-16

AP6 oyster basket



Weight	Type	Dimensions (cm)	mesh size (mm)
900	NR	100x50	4 6 9 14 18

Poches square mesh box



Weight	Type	Dimensions cm	Mesh size (mm)									
			two	3	4	6	9	13	14	18	23	
360	RS	100x40	✓									
410	NRS	100x40	✓									
550	NR	100x50			✓	✓	✓	✓	✓	✓		
550	NRS				✓	✓	✓	✓	✓	✓	✓	
550	RS			✓	✓	✓	✓	✓	✓	✓	✓	
700	NR	100x50			✓	✓	✓	✓	✓	✓		✓
700	NRS				✓	✓	✓	✓	✓	✓	✓	✓
700	RS			✓	✓	✓	✓	✓	✓	✓	✓	✓
700	R				✓	✓	✓	✓	✓	✓	✓	✓
900	NRS	100x50			✓			✓	✓		✓	
900	RS				✓							
900	R				✓	✓		✓	✓	✓	✓	

Poches rhombic mesh

Specialists in Turnkey Projects



Long Line Offshore Project.

The turnkey projects developed by GRUPO EURORED are an example of sustainability.

When we take charge of the complete design of the installation as well as the supply of all the necessary materials based on the requirements established by the client, we guarantee production with the highest standards of food quality and certification.





MYTICULTURE

Ropes

All our ropes are designed for maximum performance in the Long Line cultivation system, simple or continuous.

They have a high resistance against UV rays to protect the rope from the elements and are submersible (self sinking without lead).

Thanks to their different finishes and raw material, the ropes are designed to provide a great capacity for capturing mussel seeds and withstand a high production load during the fattening phase, with excellent grip.

We offer multiple models with different finishes, such as twisted or braided rope, suitable for collection and production, according to their hairy or curly texture.

We also have mussel nets, biodegradable coconut rope and spliced ropes for a better hold of the productive load.



Name	Weight / mGr.	MBL (kg)	Colour	Diameter (mm)	Format	Length (m)
Twisted Rope Pickup						
EUR.LL.CAP01	46	1850	Blue	14	Coil	500
EUR.LL.CAP02	232	1850	Blue	14	Coil	1500
Twisted rope hairy pickup						
EUR.LL.CAP03	48	1850	Blue	14	Coil	500
EUR.LL.CAP04	242	1850	Blue	14	Coil	2000
Twisted Rope Std Production						
EUR.LL.P01	46	1850	black	14	Coil	500
EUR.LL.P02	186	1850	black	14	Coil	2000
Twisted rope furry production						
EUR.LL.P03	57	9500	black	24	Coil	500
EUR.LL.P04	78	12500	black	28	Coil	500
EUR.LL.P05	101	16000	black	32	Coil	500
EUR.LL.P06	158	24000	black	40	Coil	500
Twisted rope extra hairy production						
EUR.LL.P07	35	2700	black	12		500
Single Crop Rope						
EUR.LL.S01	6	1850	black	12	Section	12
EUR.LL.S02	6	1850	black	14	Section	12
EUR.LL.S03	9	1850	black	16	Section	12

Myticulture

Ropes

Cultivation ropes



offshore special rope

- Specifically designed for offshore cultivation.
- Its specialized Aqua Trim design reduces biofouling.
- Its fibtrim design allows multiple anchor points.
- Highest loop density available.
- Fully balanced construction.



Aqualoop HM Cultivation Rope

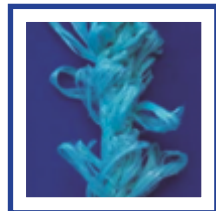
- Ideal quality / price for offshore
- Ideal for locations with high tides.
- Its specialized Aqua Trim design reduces biofouling.
- Its fibtrim design allows multiple anchor points.
- Fully balanced construction.



Xmas Tree Crop Rope

- Ideal for sheltered waters.
- Straight bristles reduce crop damage during harvest.
- Economic construction.
- High quality UV stabilized thread.
- Fully balanced construction.

Specialized ropes



Lite Loop Rope

- Ideal for locations with high tides / currents.
- Light Soul.
- Produces less drag than other strings.
- Reduces fouling on the ropes.
- Reduces sinking caused. due to excessive settling.



Aqualoop HM Cultivation Rope

- High density brown piping.
- Unique twin edge filament process produces a short, dense loop, blending with a longer outer loop.
- Exaggeratedly large soul to increase volume.
- Higher surface.

Pick up rope



Xmas Tree Crop Rope

- Superior seed pickup, with proven retention.
- Straight filaments so as not to damage the seed during removal.
- Each section includes weight individually.
- Fully balanced construction.

Sticks Rope



Nylon rope (also option with polypropylene) that is characterized by its roughness, which facilitates the function of gripping the mussel, helped by the plastic sticks embedded in it, thus preventing the mussel from collapsing

These sticks are mechanically embedded in the rope at a distance of 35 cm between each one, and this distance can be varied at the request of each client.

Coconut rope



Coconut fiber collection rope that collects the mussel seed. Once attached to the rope, it is cut by the fattening and growth phase.

Available model Ajengo (4 twists), stronger, to support more weight and Ajengo 3 Low, to support less weight, depending on the catchment area.

Mussel catchment rope

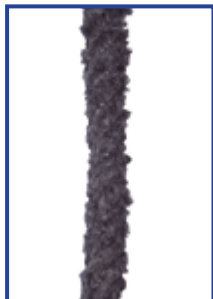


Mussel harvesting rope made of high-tenacity polypropylene, with a diffuse surface that improves its ability to obtain greater seed collection, with excellent resistance to UV rays.



Ropes

Twisted rope



Twisted hairy

- **cultivation method:** Simple long line or punt.
- **Material:** Medium tenacity polyester.
- **Building:** Twisted 4 strands.
- **Surface:** Hairy.
- **UV resistance:** High.
- **Buoyancy:** Sinking car.
- Ideal for capturing seed.



Kinky Hairy Offshore

- **cultivation method:** Simple long line or punt. Special offshore conditions
- **Material:** Medium tenacity polyester + iKrome.
- **Building:** Twisted 4 strands.
- **Surface:** Hairy.
- **UV resistance:** High.
- **Buoyancy:** Sinking car.
- Ideal for cultivation and catchment.



Crooked Sagustan

- **cultivation method:** Simple long line or punt.
- **Material:** Medium tenacity polyester. (Optional contribution of iKrome fibers)
- **Building:** Twisted 4 strands.
- **Surface:** Hairy with a small curl.
- **UV resistance:** High.
- **Buoyancy:** Sinking car.
- Ideal cultivation and uptake.



Twisted curly

- **cultivation method:** Simple long line or punt.
- **Material:** Medium tenacity polyester.
- **Building:** Twisted 4 strands.
- **Surface:** Curled for greater grip.
- **UV resistance:** High.
- **Buoyancy:** Sinking car.
- Ideal for seed collection.



Crooked grope

- Cultivation rope with different amount of crimps (3,2 or 1 crimp) depending on the area in which it is used.
- **cultivation method:** Long line single/continuous
- **Material:** Medium tenacity polyester.
- **Building:** Hair: Twisted and curly endowed with extra grip.
- **UV resistance:** High.
- **Buoyancy:** High.

Braided rope



Smooth braided

- **cultivation method:** Long line Continuous
- **Material:** Medium tenacity polyester.
- **Building:** Braided
- **Surface:** Lisa.
- **UV resistance:** High.
- **Buoyancy:** Sinking car.
- **Neutral Torque:** (Does not turn).



Hairy Braided

- **cultivation method:** Continuous long line.
- **Material:** Medium tenacity polyester.
- **Building:** Braided.
- **Surface:** Hairy.
- **UV resistance:** High.
- **Buoyancy:** Sinking car.
- **Neutral Torque:** (Does not turn).



Extra Hairy Braided

- **cultivation method:** Continuous long line.
- **Material:** Medium tenacity polyester.
- **Building:** Braided
- **Surface:** Extra Hairy (Double surface).
- **UV resistance:** High.
- **Buoyancy:** Sinking car.
- **Neutral Torque:** (Does not turn).



Kinky Braided

- **cultivation method:** Continuous long line.
- **Material:** Medium tenacity polyester.
- **Building:** Braided.
- **Surface:** Curly.
- **UV resistance:** High.
- **Buoyancy:** Sinking car.
- **Neutral Torque:** (Does not turn).



Braided Curly Hair

- **cultivation method:** Continuous long line.
- **Material:** Medium tenacity polyester.
- **Building:** Braided.
- **Surface:** Hairy and curly, to grasp and grasp.
- **UV resistance:** High.
- **Buoyancy:** Sinking car.
- **Neutral Torque:** (Does not turn).



Cotton mesh

Woven cotton mesh suitable for unfolding mussels for cultivation in lagoons and in the sea, as the mussels grow, it breaks, leaving the mussels to be retained only by the plastic mesh, while the cotton breaks up and disintegrates .



Code	Format	Material	Mesh	meters
EUR.C01	Tubular	Cotton	30	2000
EUR.C02	Tubular	Cotton	twenty	2000
EUR.C03	Tubular	Cotton	fifteen	1000
EUR.C04	Cartridge	Cotton	30	1000
EUR.C05	Cartridge	Cotton	30	2000
EUR.C06	Cartridge	Cotton	30	3000
EUR.C07	flat	Cotton	13	100
EUR.C08	flat	Cotton/Acetate	fifteen	100
EUR.C09	flat	Double Cotton	fifteen	200

Stringing machine

Get a speed of 2 meters per second of unfolded rope. The regular pull of the string due to the double puller provides a totally uniform stringing from the beginning to the end.

The position of the controls and the extendable arms make the A4 more comfortable and manageable.

Three possibilities of seed feeding or unfolding with exchange of axes.

Adapted to community safety regulations.



Tubular meshes



Tubular nets specially designed for mussel farming in Long Lines. Depending on the size of the mussel, we work with different light meshes and diameters that are more suitable for each size to capture mollusk larvae or protect production from predators.

Manufactured from extruded polyethylene, they offer high resistance to breakage, making them suitable for mussel farming, regardless of their weight, in rough waters.

Characteristics

- Wide range of references of semi perimeters and mesh light
- Resistant to breakage thanks to its grammage and design Stabilized against UV rays (long-lasting)
- recyclable
- Coils: 500, 900, 1000 meters.
- Colors: Colorless; black; blue; lilac (color option)

Number of meshes	mm mesh	ømm	Length (m)	Meters on a Pallet	Colour
7	80	120	1000	48000	White
7	80	120	1000	48000	Black
7	70	100	1000	38000	White
9	82	100-125	500	30000	Black
10	35	fifty	900	54000	Blue
10	80	180	500	24000	Black
12	42	120	1000	60000	Black
13	40	600	900	54000	Magenta
17	fifty	160	500	30000	Black
7	80	120	1000	44000	Biodegradable
-	13	45-50	100	24	Multicolored
-	13	50-60	100	12	Multicolored
-	13	45-50	100	16	Multicolored
-	twenty	45-50	75	18	Multicolored
-	twenty	50-60	75	12	Multicolored
-	twenty	50-60	55	12	Multicolored

Extruded bag

Extruded mesh for the packaging and transport of molluscs (mussels, clams, snails...). The screens are available with a great combination of final characteristics. The customer can adapt the technical sheet to the product for which he needs it. The mesh is made from virgin, food-grade material and is 100% recyclable.

Length(cm)	Width(cm)	Load Cap.	sacks/Pack	sacks/Pallet	package/Pallet
Four, Five	25	3kg	4 *250	20000	40
fifty	30	5kg	4 *250	20000	40
fifty	35	5kg	2* 250	20000	40
fifty	40	7kg	2* 250	15000	30
55	25	7kg	2* 250	15000	30
55	30	7kg	2* 250	15000	30
60	30	7kg	2*250	15000	30
70	30	7kg	2* 250	12500	25
70	33	10kg	2*250	12500	25
70	35	10kg	2*250	12500	25
70	40	15kg	2*250	12500	25
75	40	15kg	2*250	12500	25
80	40	20kg	2*250	12500	25

*L: +-3% *W: +-4% *S: +-3%





The background of the entire image is a close-up, high-resolution photograph of green seaweed or algae. The plants have a wavy, ruffled texture and are densely packed, filling the frame with various shades of green, from bright lime to deep forest green. The lighting appears to be natural, creating some highlights and shadows on the wet-looking surfaces of the algae.

ALGACULTURE

Coconut Rope



The coconut rope is designed for crops that want to be 100% biodegradable, it is exclusively made of coconut fibers with 3 internal twists per meter and totally handmade.

Material	Biodegradable
twists per meter	3
ømm	16.25
coil meters	205
coil weight	fifteen

Tubular meshes

We offer a range of tubular meshes developed to be able to work with the fattening of algae, especially with Kappapycus, Gracilaria and Asparanopsis.

Profits

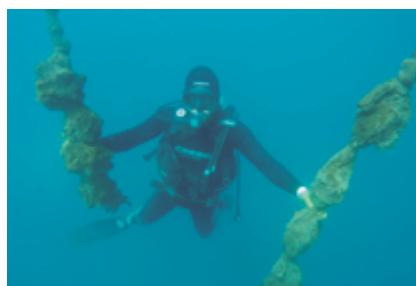
- durable and reusable
- Lightweight and easy to cut to size
- resistant to sea water
- Perfect solution to improve crop productivity
- Long life, reusable several harvests
- Reduction of labor when loading PVC pipes, facilitating the work.
- Perfect solution to improve crop productivity as well as protect it.

Characteristics

- Resistant to breakage thanks to its weight and design
- UV treatment
- recyclable
- Colors: white, black (color option)



Product	Colors	Weight	number of meshes	Mesh light	øcm	Coil Meters
4126	or	10.5	7	70	twenty	1,000
4127	or	10.5	7	80	23	1,000





**GRUPO
EURORED**

GRUPO EURORED

División de acuicultura:

Estrada Fortóns nº 23.
Redondela - 36812
Pontevedra

+34 986 203 312

+34 626 461 848

tecnico@grupoeurored.com

www.grupoeurored.com

   @grupoeurored

